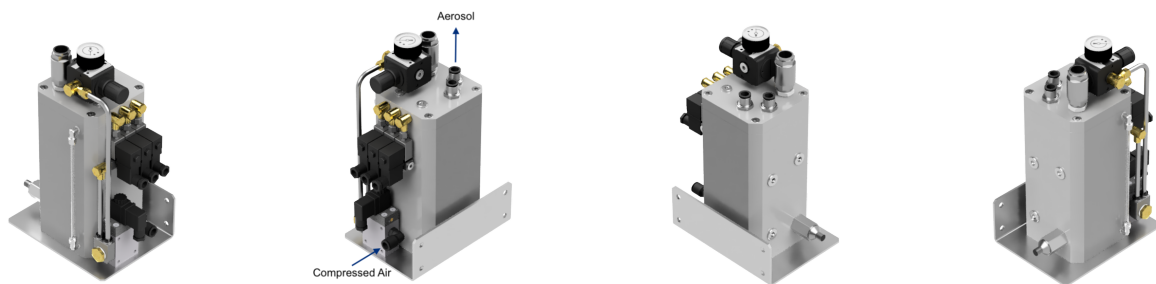


Aerosol-Booster AB 250 LC

Minimum lubrication system for internal feed with programmable dosing

- ✓ for machining centers and special machines with one to six spindles
- ✓ external control of operating pressure, total volume flow and aerosol content for programmable, tool-dependent lubrication
- ✓ highest flexibility



Operating principle

The Aerosol Booster generates an air-liquid mixture with extremely small liquid particles from non-water-miscible lubricants. This aerosol is suitable to be conducted over longer distances in hoses as well as through rotating spindles and tools. The cooling channels of the tools cause a nozzle effect through which the incoming aerosol condenses, i.e. oil and air are separated. This results in precise oil lubrication at the tool.

Three different aerosol generators are installed in the AB 250 LC, which can be controlled externally by solenoid valves individually or in groups. This enables programmable, tool-dependent lubrication.

Advantages

- ✓ wear-free and reliable, no moving parts or electronics in the unit
- ✓ manual control of the parameters operating pressure, total volume flow and oil dosage for individual tool-dependent lubrication with seven operating modes
- ✓ external control of the seven operating modes via three solenoid valves, on/off switching of lubrication via a solenoid valve
- ✓ suitable for all tool sizes
- ✓ in combination with our tank extension: automatic refilling (of several MQL units) during operation with filtered lubricant from central reservoir

Further information

Versions

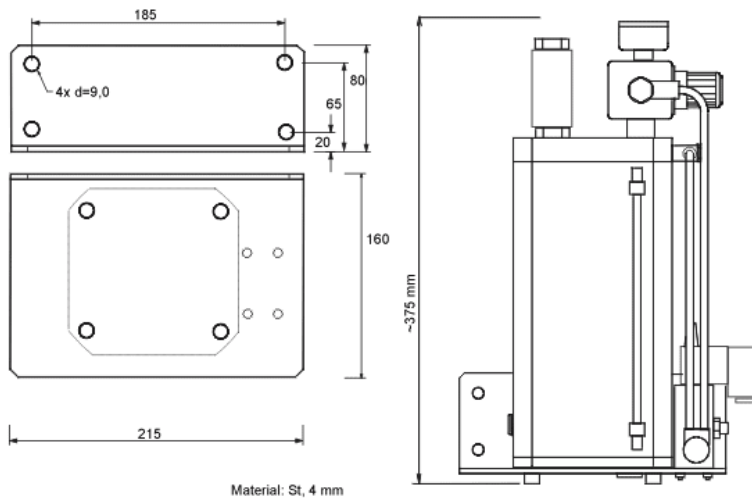
The Aerosol Booster AB 250 LC is offered in different versions with regard to operating pressure and aerosol outlets:

Delivery rate: up to 87 ml/h

Operating pressure: up to 6 or up to 10 bar

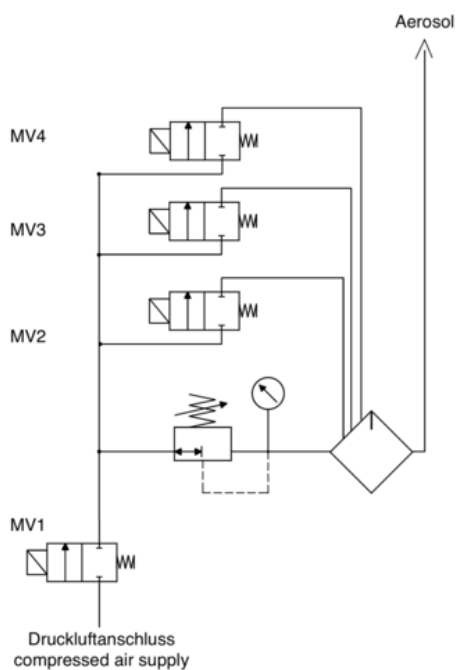
Aerosol outlets: 1, 2, 4, 6 (individually switchable with additional ball valves)

Dimensions



A free space of 300 mm is required above the unit for unobstructed filling. All dimensions in mm.

Connection diagram



Technical specifications

Filling volume:	1.8 liters
Unladen weight:	8.0 - 9.0 kg
Control:	- Switching on/off: Solenoid valve (one M function), - Operating parameters: 3 solenoid valves
Total volume flow:	DN 9
Compressed air supply:	5 - 10 bar; dry and filtered
Aerosol outlet pressure:	1.0 bar to maximum 85% of the inlet pressure

Accessories

- Pressure monitoring
- Level monitoring
- Tank extension: automatic refilling from pressurized 10l central storage reservoir
- Nozzles for external feeding of the aerosol
- Ball valves for integration into the aerosol supply line

Additional Options

Additional ball valve

Integration of a ball valve in the aerosol supply line to the spindle

- ✓ no pressure drop during tool change
- ✓ quicker response behavior
- ✓ temporary switch-off of individual supply lines

Lockable pressure regulators

Installation of lockable pressure regulators

- ✓ prevents unnoticed variation of parameters by unauthorized persons

Additional blowing air

Separate supply line of aerosol and blowing air to the machine

- ✓ aerosol and blowing air volume flow can be varied individually
- ✓ for very large tools

Remotely controllable pressure regulator

Installation of remotely controllable pressure regulators

- ✓ allows for continuous adjustment of the dosing characteristic curve by the machine control unit
- ✓ activation of special operating modes for individual tools